

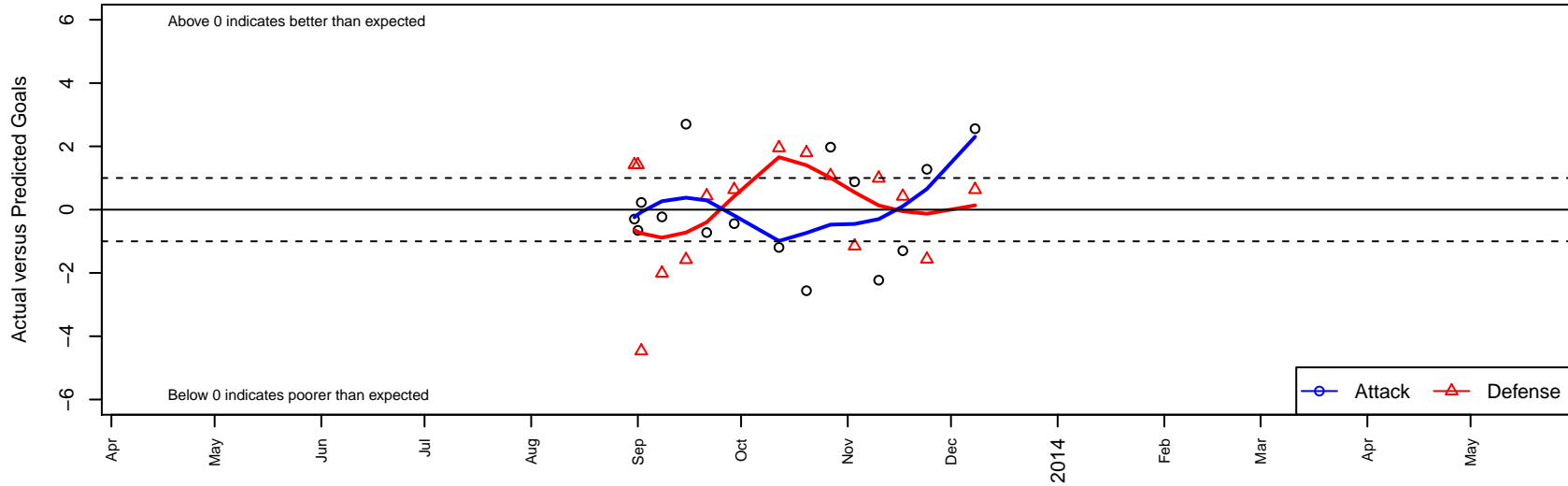
Pumas UNAM B98

Seattle, WA
 B98 total strength=1241
 attack=7.34 defense=2.9
 fall league = PSPL Classic 2 U15
 notes= Javier 2013
 alt names used:
 Pumas [B98]
 Pumas UNAM B98
 Pumas UNAM Sub 15 (Seattle)
 Pumas UNAM Sub-15 (Seattle)
 PUMAS UNAM SEATTLE SUB-15 (WA)
 Pumas UNAM Sub-15 Javier

Venues played:
 Labor Day Cup BU15
 PSPL Classic 2 U15



Pumas UNAM B98
 Dots are actual minus expected GF (blue circles) and GA (red triangles).
 Blue line is smoothed change in attack strength. Red is smoothed change in defense strength.



	date	home		away		venue	pred.home	pred.away
20685	2013-12-08	Pumas UNAM B98	6	WPFC Fury White B98	1	PSPL Classic 2 U15	3.44	1.63
19377	2013-11-24	RSA Elite B98	3	Pumas UNAM B98	3	PSPL Classic 2 U15	1.43	1.72
18857	2013-11-17	Pumas UNAM B98	1	ISC Gunners B B98	1	PSPL Classic 2 U15	2.30	1.42
18172	2013-11-10	NW United White B98	0	Pumas UNAM B98	2	PSPL Classic 2 U15	0.99	4.23
17349	2013-11-03	Pumas UNAM B98	2	Kitsap Pumas 1 B98	4	PSPL Classic 2 U15	1.12	2.85
16316	2013-10-27	MRFC White B98	0	Pumas UNAM B98	6	PSPL Classic 2 U15	1.07	4.03
15446	2013-10-20	Emerald City FC White B98	0	Pumas UNAM B98	0	PSPL Classic 2 U15	1.80	2.56
14128	2013-10-12	Pumas UNAM B98	0	Tynecastle FC B98	1	PSPL Classic 2 U15	1.19	2.95
12426	2013-09-29	WPFC Fury White B98	1	Pumas UNAM B98	3	PSPL Classic 2 U15	1.63	3.44
11216	2013-09-21	Pumas UNAM B98	1	RSA Elite B98	1	PSPL Classic 2 U15	1.72	1.43
10564	2013-09-15	ISC Gunners B B98	3	Pumas UNAM B98	5	PSPL Classic 2 U15	1.42	2.30
9601	2013-09-08	Pumas UNAM B98	4	NW United White B98	3	PSPL Classic 2 U15	4.23	0.99
8791	2013-09-02	Eastside FC White B98	9	Pumas UNAM B98	1	Labor Day Cup BU15	4.53	0.77
8723	2013-09-01	Pumas UNAM B98	0	Seattle United S Black B98	6	Labor Day Cup BU15	0.65	7.42
8597	2013-08-31	ISC Gunners B B98	0	Pumas UNAM B98	2	Labor Day Cup BU15	1.42	2.30